

English Language User Manual

Gmini™ 400



Pocket Music / Photo / Games / Video

- MPEG-4 Video Player
- MP3 & WMA Music Player
- Photo Viewer
- USB 2.0 Hard Disk
- Game player

User Manual for ARCHOS Gmini™ 400
Version 1.1

ARCHOS

Please visit our website to download the most recent manual and software for this product.

Table of Contents

1	INTRO - Ports, Buttons and Connections	6
2	INTRO - First Time Usage	8
2.1	Plugging in the AC Adapter	8
2.2	Turning on the Gmini 400	8
2.3	Shutting off the Gmini 400 and Battery saving features	8
2.4	Changing the Language	9
2.5	Foreign Character Sets	9
2.6	Charging the Batteries	9
2.7	Caring for the Gmini 400	10
2.8	Hardware Reset	10
3	MUSIC - Playing Music Files	11
3.1	Button Control	11
3.2	Playing Through your Stereo System	12
3.3	Artist, Album, Title ... ID3 Tags	13
3.4	The ARCLibrary (Browsing by Album, Artist, or Song name)	13
3.5	Setting a Bookmark	14
3.6	The Resume Function	15
4	MUSIC - Playlists	16
4.1	Playing a Playlist	16
4.2	Creating a Playlist	17
4.3	Saving a Playlist	17
4.4	Adding songs to a Playlist while listening to Music	18
5	MUSIC - Recording Music	19
5.1	Cable Connections for Audio Recording	19
5.2	Recording Procedure	20
	<i>Microphone</i>	21
	<i>Analog Line-In</i>	21
	<i>Incremental Recording</i>	21
5.3	Where is the Recording Saved?	21
5.4	Audio Editing	22
6	MUSIC - Using Windows® Media Player 9	24
6.1	Installing Windows Media Player 9	24
6.2	Installing the WMP9 Service Provider Plug-in	24
6.3	Copying Music to your Gmini 400	25
6.4	Copy Protected Music Downloads	25
7	MUSIC - Using iTunes™ with your Gmini 400	26
8	GAMES - Playing Mophun® games	27
8.1	Downloading Games	27
	<i>Copy to Gmini 400 root</i>	27
8.2	Playing a Game	28

9	VIDEO - Playing Video	29
9.1	Setting a Bookmark	30
9.2	The Resume Function	30
9.3	Display Format Settings	31
9.4	Playing Video Files from the Internet	31
10	VIDEO - Creating MPEG4 video files with your computer	32
	<i>How to create an MPEG-4 video file</i>	32
	<i>PC Tools</i>	32
	<i>Macintosh Users</i>	32
10.1	Installing the PC Software	33
	<i>DivX™ Codec</i>	33
	<i>Virtual Dub™</i>	33
	<i>MPG4 Translator</i>	33
	<i>MP3 Sound Codec</i>	34
10.2	Using MPG4 Translator	35
	<i>Select Source & Destination Files</i>	35
	<i>Change Settings</i>	35
	<i>Target & Priority</i>	36
	<i>Start</i>	36
11	PHOTO - Viewing Photos	37
11.1	Viewing Photos	37
	<i>Magnifying Photos</i>	38
11.2	Viewing a slideshow	38
11.3	Transferring photos to your Gmini 400	39
12	BROWSER - Using the Browser	41
12.1	Navigating the Directory Structure	41
12.2	Navigating the Directory Structure	42
	<i>File Operations</i>	42
	<i>Folder Operations</i>	42
	<i>Copying and Moving Files and Folders</i>	43
12.3	Using the Virtual Keyboard	44
13	Connecting/Disconnecting the Gmini 400 to/from your PC	45
13.1	Connecting the Gmini 400	45
	<i>Windows® ME, 2000, XP (Home/professional)</i>	45
	<i>Macintosh™ OS 9.X</i>	46
	<i>Macintosh™ OS X</i>	46
	<i>Macintosh™ OS X (10.2 Jaguar and 10.3 Panther)</i>	46
13.2	Disconnecting the Gmini 400 from your Computer	46
	<i>Windows®</i>	47
	<i>Macintosh®</i>	48
14	SETTINGS	49
14.1	Sound Settings	49
14.2	Play Mode Settings	50
14.3	Clock Settings	52
14.4	Display Settings	52
14.5	Power Settings	54
14.6	System Settings	55

15 Updating the Gmini 400 Firmware Operating System (OS)	56
Download the Update_Gmini400.AOS file	56
Read the History.txt File	56
Copy to Gmini 400 root and Update	56
16 Technical Support	58
17 Troubleshooting	60
17.1 USB Connection issues	60
17.2 Charging and Power issues	61
17.3 Gmini 400 locks up (freezes operation) or Stops	61
17.4 The Computer locks-up (freezes operation) or Stops	62
17.5 File issues, corrupted data, formatting, and partitioning	62
Windows® 98SE & ME Running Scan-Disk (Error Checking)	63
Windows® XP & 2000 Running Check Disk Utility (Chkdsk)	64
18 Technical Specifications	65
19 Legal	66

Dear Customer,

ARCHOS thanks you for your choice of this exciting Gmini 400 product. With this beautiful device in your pocket, you can enjoy digital music, digital photos, games, or digital video anytime and anywhere. We are sure that your Gmini 400 will give you years of listening and viewing enjoyment. Of course you can always use it as a regular portable hard disk too for all your personal computer files.

This guide will explain to you the functions of the Gmini 400. Our engineers have packed this product with many functions and capabilities. The better you know how to use it, the more enjoyment you will get from it. Remember, with the Gmini 400, you can...

- Listen to MP3, WMA, or WAV music files
- Play a variety of 2D and 3D Mophun® video games
- Play MPEG-4 video files on the built-in screen, or to a television or video projector
- View digital photos and make personalized slide shows
- Record music files directly into digital format from your hi-fi without a computer
- Use it as a voice recorder with its built-in microphone
- Store .DOC, .PDF, or any type of data file – it's a portable hard drive too!
- Create music Playlists
- Copy Pictures or data from CompactFlash™ cards directly to the Gmini 400 (may require a freely available plug-in from the Archos website).

We wish you many years of enjoyment from your Gmini 400 product. Please do register your product at our website **www.archos.com/register/products.html** to ensure that you get access to our help line and to be informed of free software updates for your product.

Wishing you the best music, photo, gaming, and video experience,

The ARCHOS TEAM

INTRO - Ports, Buttons and Connections



- a** Hard disk activity indicator (red)
- b** On indicator (green)
- c** Battery charger indicator (green) – blinks when the battery is fully charged
- d** On/Enter/Play/Go ► – Hold for 3 seconds to turn on the Gmini 400
- e** Move UP (also increases volume during media playback)
- f** Move DOWN (also decreases volume during media playback)
- g** Move LEFT (also plays previous song or fast reverse through a song or video)
- h** Move RIGHT (also plays next song or fast forward through a song or video)
- i** Game Control 1 (Function depends on game) [acts as Enter/Play when not in game mode]
- j** Game Control 2 (Function depends on game) [acts as Escape/Stop when not in game mode]
- k** Escape/Stop/Go back/Off - Hold for 3 seconds to turn off device
- l** F1 command or function
- m** F2 command or function
- n** F3 command or function
- o** Function button F1 – activates the on-screen function or command above it (l)
- p** Function button F2 – activates the on-screen function or command above it (m)
Long press to switch display between built in screen and external TV
- q** Function button F3 – activates the on-screen function or command above it (n)



- a** Multiconnect adapter – allows for an analog audio input (Line In)
- b** Multi-connect jack – for headphones, AV cable, or FM Remote control (optional accessory)
- c** Microphone – for making digital voice recordings
- d** CompactFlash™ slot – Type I compatible
- e** USB 2.0 port (USB 1.1 compatible) to connect the Gmini 400 to your computer
- f** Power Connector (Use only the supplied Archos power charger/adaptor)

Please take the time to read though this manual. There are many things that this device can do that you may not be aware of.

2.1 Plugging in the AC Adapter

- Use only the included ARCHOS charger/adapter.
- Before using for the first time, charge the batteries completely.
- You may use the Archos Gmini 400 while its battery is charging, but it will then take longer before the battery is completely charged.

2.2 Turning on the Gmini 400

- **Hold the PLAY/ON button ► for 4 seconds.** The green "On" indicator light will turn on. Be patient, it will take a few seconds for the operating system to boot up.
- If the unit shuts off after holding the ON button for several seconds, plug in the Archos adapter/charger to make sure the batteries get charged.

2.3 Shutting off the Gmini 400 and Battery saving features

To shut off the unit, press and hold the STOP/ESC/OFF button for 3 seconds.

In the Power menu [**Setup → Power: Battery Operation**] there is a **Power Off** parameter. It is factory set to 2 minutes. Thus, if your Gmini 400 is idle for 2 minutes, it will shut off. This setting can be changed from one to nine minutes or to 'never'.

In the Power menu [**Setup → Power: Battery Operation**] there is a **Backlight Off** parameter to save battery power (the lighting of the screen consumes a lot of the battery power). It is factory set to 30 seconds. That is, if there are no buttons pressed, the screen will shut off in order to save battery life. To turn the screen back on, just click once on any button. See section 14.5 for a complete explanation.



2.4 Changing the Language

The Gmini 400 interface can be set to English (default), French, German or Spanish.

- To change the language, move the cursor to **Setup** and then click PLAY/ENTER ►.
- Then move with the joystick to **Display** and click PLAY/ENTER ►.
- Highlight the **Language** parameter.
- Use the Right or Left button to choose the desired language.
- Choose French, German, Spanish or English.
- The language displayed will change immediately.
- Click on the STOP/ESC button to exit this screen.



2.5 Foreign Character Sets

You have the possibility to display your file names, folder names, and MP3 ID3 tags in various character sets (ex: Korean, Japanese, Simplified Chinese, etc.). You can find the language files CodePage_name.4FZ in the font folder under /Data on the Gmini 400 hard disk or on the Archos website under the heading Software. If, for example, you would like to have the Korean language display, then you would copy the file CP949.4FZ into the folder /system on the Gmini 400 and shut down and restart the Gmini 400. File names, folder names, and ID3 tags written using the Microsoft® codepage for the language will now be displayed in that character set. Only one .4FZ can be used at a time, thus you should only put one .4FZ file into the /system folder. When an .4FZ language file is used, the interface language will be set to English.

2.6 Charging the Batteries

Use ONLY an Archos charger/adaptor that is specified for the Gmini 400. Other chargers or adaptors may damage the Gmini 400. The green CHARGE indicator lights up to indicate that the external adapter is connected. The batteries will charge automatically when the AC adapter/charger is plugged in. Once the batteries are fully charged, this light will blink, indicating that you can disconnect the charger/adaptor. Once charged, you can get up to 10 hours* of MP3 music playback time and up to 5 hours* of AVI video playback time (on the built-in screen) from

the batteries. The Gmini 400 is made with integrated batteries which are designed to last for the life of the Gmini 400. This means that you will not have to change them. If, in the exceptional case, the batteries need changing, this should only be done by an Archos technician.

** depending on how you use it (start/stop/writing, etc.)*

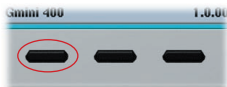
2.7 Caring for the Gmini 400

The Archos Gmini 400 is an electronic product that needs to be treated with more care than typical consumer electronic products.

- Do not subject it to shock.
- Do not subject it to heat. Keep it ventilated (especially when connected to a computer).
- Keep the Gmini 400 away from water and excessively humid areas.
- Keep the Gmini 400 away from high electromagnetic fields.
- Keep any connected cords to the Gmini 400 neatly arranged. This light product could fall if a cord is accidentally pulled by a child.
- Do not open up the Gmini 400. There are no user serviceable parts inside. Opening will void your warranty.









2.8 Hardware Reset

In the event that your Gmini 400 freezes operation (due to electrostatic phenomena for example), you can actuate a hardware reset by holding down on the STOP/ESC button for 10 seconds. In normal operation, the STOP/ESC button will shut down the Gmini 400 after being held down for 3 seconds.



To lock the Gmini 400 buttons, press and hold the left function button for three seconds. The Gmini 400 will display the message "Buttons locked!" on the bottom of the screen. Press this again for three seconds to unlock the buttons.

What the Icons indicate

Status	Play Order	Play Mode
 Stopped	 - no icon - Play once	See section 14.2
 Blinks while playing a track	 Repeat playing	
 Current track is paused	 Shuffle (random) track selection	
 Recording a track	 Playing a playlist	

3.2 Playing Through your Stereo System



On your HiFi there are two RCA type connectors that are labeled Aux in, CD in, or Line-in. Typically they are color coded white and red for left and right stereo channels respectively. Just take the included A/V cable and plug it into the Gmini 400 headphone jack. Plug the red and white connectors into the Aux in, CD in, or line-in of your stereo system. Do not plug the yellow (video) connector into anything. On the front of your stereo, select the corresponding auxiliary input

or CD input that you plugged into on the back of your HiFi system. Press Play and then adjust the Gmini 400 volume (UP/DOWN buttons) in order to supply your stereo system with a signal that is neither too weak nor too strong. If the sound is distorted, you will need to reduce the Gmini 400's volume.

3.3 Artist, Album, Title ... ID3 Tags



Wes Burden
Brave New World
Mirror
MP3 128 kb/s 44.1 k

ID3 Tags are information about the recording which found inside of an MP3 music file. When someone creates an MP3 music file, he or she has the option of adding information to it. This information can include, among other things, the name of the artist (Wes Burden), the album name (Brave New World), the title of the song (Mirror), and a small image of the album cover (only jpeg images not progressive jpeg). If these data are present, the Gmini 400 will display them on the screen when it plays the file. If they are not present, then the Gmini 400 will display in order, the name of the parent folder, the name of the current folder, and then the name of the file.

As of the writing of this manual, there are two versions of ID3 tags that are firmly established standards, ID3 version 1 and ID3 version 2. Your Gmini 400 can read either version of tags, and display the information. If both sets of tags have information, the data from the ID3 version 2 tag will be displayed. Other tag information may include year and genre of music. These other tag data are not displayed by the Gmini 400, but are used to index your music in the ARCLibrary (see next section). WMA files also have tags and these are displayed as well when the file is played.

3.4 The ARCLibrary (Browsing by Album, Artist, or Song name)



The ARCLibrary is a system for choosing your music by its characteristics. It can be turned On or Off in the settings from **Setup > Playmode**. As shown in this screen capture, you can select your music by Artist, Album, Song Title, Genre, or Year. MP3 and WMA music files have internal data tags to hold information about the song. For MP3 files, these are known as ID3 tags. Not

all MP3 files have all this information filled in. If you purchase a song from a music download service, the songs will have this information. If you have an MP3 or WMA file without this tag information, then you can add or change it by going to the properties of the file in Windows® Explorer. Once you re-index the ARCLibrary, you will have access to this track



from the ARCLibrary. Audio files created with the microphone will be indexed as Artist = ARCHOS and Album = Audio Recording. The ARCLibrary indexes all the music and playlists that it finds in the folders **Music** and **Playlists** on your Gmini 400's hard drive, by using the tag information in each song. When you transfer music to your Gmini 400

from your computer, it goes directly to the Gmini 400 hard disk without the ARCLibrary knowing about the new song. Thus, in order for your new songs to be indexed into the ARCLibrary, you must update it with the **Update** button as shown here in the **Setup > Playmode** screen. You have the following options to set the ARCLibrary.

Off – From the Music icon, you will just browse music files in the folder Music.

On – You can browse music by its characteristics (ID3 tags) but you will have to manually update the ARCLibrary each time you add new music from your computer to your Gmini 400.

Automatic – The ARCLibrary will be set to **On** and it will automatically update the library each time it notices that you have disconnected from a computer. A message screen will appear indicating that it is updating the ARCLibrary contents.

3.5 Setting a Bookmark



If you are listening to a song, or perhaps a long recording, and would like to place a bookmark in it in order to pick up from this point at another time, you can use the Bookmark function.

You simply click on the center function button labeled Options, then choose Set Bookmark. This will set a bookmark in the audio file at the current position. You can only set one bookmark per file. When you look at the file in your browser, it will have a yellow check mark on its icon indicating that this file has a bookmark set within it. You can have a maximum of 16 files bookmarked. Setting more bookmarks will then start to erase



the oldest bookmarks. The next time you play the audio file, you will be presented with three options:

Resume: Start playing from the bookmarked position.

Ignore: Keep the bookmark but start playing from the very beginning.

Clear: Clear the bookmark from this file and start playing from the very beginning.

3.6 The Resume Function



When you turn on your Gmini 400 you will sometimes notice that the icon which is highlighted on the main screen is not the Browser but rather the Resume icon. This icon is highlighted when the Gmini 400 can resume the last played audio or video file.

4

MUSIC - Playlists



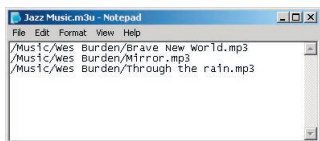
A Playlist is a list of songs that the Gmini 400 will automatically play one after the other. The Gmini 400 can load one playlist at a time into its internal memory. You can create new playlists, add or delete songs from a playlist, or Save a playlist as a file (file type .m3u) to be used another time. There is no limit to the number of playlists you can save on the

Gmini 400 hard disk. Playlists are indicated by a special list icon (circled icon to the left).

4.1 Playing a Playlist



To play a Playlist, you simply scroll to the Playlist, such as 'Jazz Music' shown to the left, and click on PLAY ►. The list of songs will be loaded into the internal memory of the Gmini 400 and then be displayed in a separate panel.

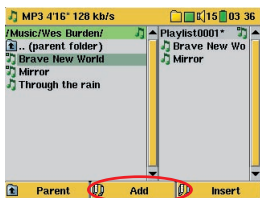


Click on PLAY ► and the songs will be played in the order shown. To shuffle the music entries in a random order, you can click on **Playlist (F1)**, then choose **Shuffle**. You can open a Playlist file (*Playlistname.m3u*) on your computer with a text editor such

as Notepad, and you will see that it is merely a list of files to be played along with the hard disk path to find them. If you delete a Playlist from your Gmini 400, you are only deleting the list and not the music itself.

Example of the contents of the .m3u Playlist file 'Jazz Music'.

4.2 Creating a Playlist

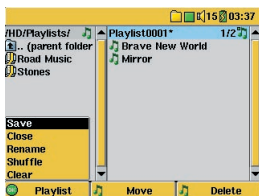


To create a Playlist, press the **RIGHT** button while you are in the Music browser. A second window will open on the right side to display the Playlist contents. You can now start adding songs to the current Playlist. In the left window, search for the songs you would like to add to your Playlist. Once the song is highlighted, click on the **Add** function

button to add it to the Playlist. The song will be added to the Playlist and a small mark next to the music icon will be made to indicate that it is in the Playlist. Continue searching and adding songs in this manner until you are satisfied. You can also click the **Add** or **Insert** button when highlighting a folder. All the contents of the folder and its subfolders will be added or inserted into the current playlist.

You can jump back and forth between the browser and the playlist by clicking on the **LEFT** and **RIGHT** buttons. A Playlist can have a maximum of 5000 songs. We recommend that you save your Playlists.

4.3 Saving a Playlist



It is recommended that each time you create a Playlist, you save it to a separate folder called *Playlists*. These lists take very little space on your hard disk and if well named, give you easy access to your favorite songs. Go to the Playlist by selecting **Music** from the main menu and then click on the **RIGHT** button.

You will then see the list of songs in the current Playlist. Click the function button **F1** then choose **Save**.

ATTENTION: Make sure that your left window is the **Playlists** folder, because the open window on the left is the location the Gmini 400 will be saving your Playlist to.

Save – Saves the current playlist to the folder open in the left window. The * next to the playlist name indicates that this playlist has not been saved.

Close – Closes the windows and returns to the main menu screen.

Rename – Renames the current playlist.

Shuffle – Randomly shuffles the order of the songs in the current playlist.


Clear – Clears the contents of the current playlist.

Button Move – Allows you to change the place in the list of the highlighted song. Click on **Move** and then click on UP or DOWN to move the song up or down the list. Click OK when finished.

Button Delete – Will delete the highlighted song from the Playlist. It will not delete the actual song itself from your hard disk, just from the current Playlist.

***Important:** Once you save a Playlist it is important that you do not move or rename the actual MP3 files as the Playlist searches in the original file location. If you need to move your MP3 files to a different folder, you'll have to recreate your Playlist.*

4.4 Adding songs to a Playlist while listening to Music

This can only be done if you have entered your Music folder via the Music icon  and not by the general browser. To add the song you are listening to or any other song to the current Playlist, do the following:

- While playing a song, click on Options and choose Edit Playlist. A browser window and the Playlist will open.
- Click on the LEFT button to go to the hard disk browser window.
- Select the song or folder of songs to add, then click the button Add.
- Click ESC to return to the playing screen.



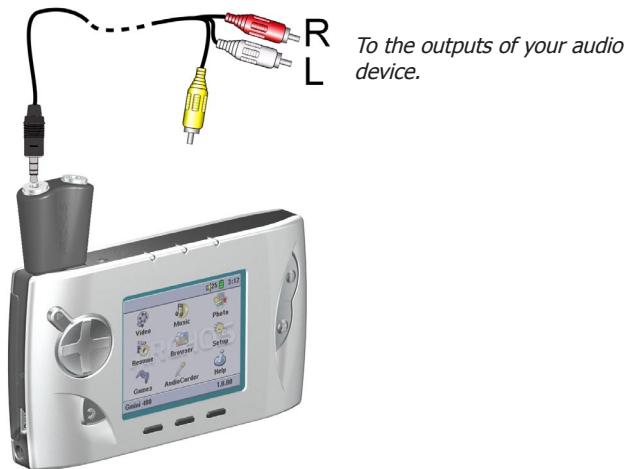
5

MUSIC - Recording Music

With the Gmini 400 series, you do not need a computer to create digital music files. It is capable of recording from the built-in microphone or an analog line source (ex: HiFi system, Boombox, CD Player, etc) into a standard Windows® WAV format, either PCM (uncompressed) or ADPCM (compressed).

5.1 Cable Connections for Audio Recording

Plug the multi-connect adapter into the Gmini 400 and then plug the included AV cable into the side marked Line-In as shown here. Connect the Red (Right) and White (Left) connectors to the audio output of your HiFi or other audio device that you are recording from. Do not plug the yellow connector to anything.



5.2 Recording Procedure

Before the actual audio recording begins, there is a pre-recording screen which will allow you to adjust your recording settings.



1. From the home screen, select AudioCorder then click on ENTER/GO ►.



2. In the pre-recording screen, adjust the **recording level*** by clicking on the LEFT and RIGHT buttons. Click on the F3 Start button to start recording. Attention, the first time recording you should adjust your **Settings**.



3. Click on **Settings** to reveal the recording parameters screen as shown above. Be sure to set the correct **Source**. You will hear silence during recording and playback if the incorrect source is chosen.



4. Once you have clicked on the **Start** button, you can pause the recording by clicking the same function button (now labelled **Pause**), or stop the recording by clicking on the STOP/ESC button.

* (Analog recordings only) You should try some test recordings before deciding on which recording level gives the best sound quality. Don't be tricked by the volume of the headphones which can be adjusted independently with the UP and DOWN buttons.

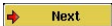
Microphone

The built-in microphone is located on the top of the Gmini 400 unit next to the headphone jack. Make sure that you have selected **Microphone** as the input source in the pre-recording Settings screen. The microphone recording level is preset.

Analog Line-In

You can record from any line-level audio source to the Gmini 400. Make sure that you select the **Analog Line-In** as the input source in the pre-recording Setup screen. If you have the TV cradle unit, you can plug the Red and White connectors of the AV In cables to the output of your home stereo system or the audio device you are recording from. If you have the optional multi-connect adapter plug, you can enter a stereo audio signal into the AV400 directly. Be careful that the source audio is supplying a line level and not an amplified signal (turning down the volume on the player will work if you are using the headphone out signal of your audio device). An amplified signal will make for a terribly distorted recording. You can also use a high quality pre-amplified microphone, such as the one Archos sells as an option.

Incremental Recording



While recording, you will notice the center function button labeled Next. This allows you to create incremental recordings.

That is, the current recording stops and a new recording instantly begins. The next recording has an additional number appended to its name. Thus if you create multiple incremental recordings, you might, for example, have file names of REC0000_01, REC0000_02, etc. This is good for recording old cassettes and old vinyl records. You can click on the **Next** button during the blank space between each song. That way, each song of the vinyl disk or audio cassette will be one single audio file.

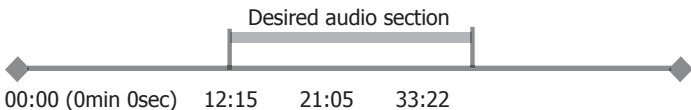
5.3 Where is the Recording Saved?

The default location for audio recordings is the folder called **Music**. If you click on the Music icon in the main menu, you will go to this folder. Notice that the right function button is labeled **Record**. Each time you use this button to record audio instead of the AudioCorder button on the main menu, you set the recording default location to the current folder. For example, let's say you have a folder called */Music/Voice/Lectures*. If you go to this folder and then make a recording using the right function button

Record, you will set the default record location to this folder. Now, each time you use the AudioCorder icon to start a recording, your recording will be saved in the folder */Music/Voice/Lectures*.

5.4 Audio Editing

Audio files (microphone recordings / analog recordings / FM Remote Control (optional)) can be modified by deleting the sections you do not wish included. If you would like to edit an audio recording, you have the possibility to “crop out” the exact section of the recording you would like to save. For example, you have recorded a lecture of 33 minutes and 22 seconds in length. You would like to cut out and save just one particular important section from 12 minutes and 15 seconds to 21 minutes and 5 seconds. The diagram below illustrates the situation.



To keep just this section (cropping it), you will:

- locate this file from the Browser mode
 - Select **Edit** from the **File** menu in order to enter the edit mode
 - In the edit mode, set the cut-IN point (12:15 in our example)
 - Next, set the cut-OUT point (21:05 in our example)
- Save the edit



Highlight the file to edit and select Edit from the file menu. Only files which have been created with the Gmini 400 recording function will show Edit in the file menu. Files created from CDs or downloaded cannot be edited. Once you enter the edit mode, the audio file will play in a continuous loop so that you will be able to hear how your edit sounds.

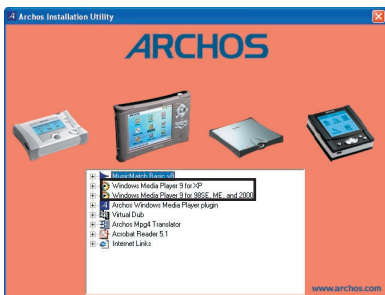


Use the fast-reverse and fast-forward buttons (LEFT/RIGHT buttons) to locate the points you want the new file to start and end. These are the cut-IN and cut-OUT points. Once you have set these points, you can save the edit. In this example, a new file REC0000.wav will be made. Your original file is left untouched. You will notice that your Cut-IN and Cut-OUT times are marked just above the file name.



The Gmini 400 is designed to work seamlessly with Version 9 of Windows® Media Player (WMP9). By installing the Archos Service Provider plug-in, WMP9 will recognize your Gmini 400 as a connected music device. You can then easily copy your CD collection to your Gmini 400. WMP9 will encode each song into the WMA format (preferred compressed format of Windows®) and then store them on your connected Archos device. This Service Provider plug-in will also allow you to play purchased music from on-line music services such as Napster.com, MusicNow.com, BuyMusic.com, and Liquid.com.

6.1 Installing Windows Media Player 9

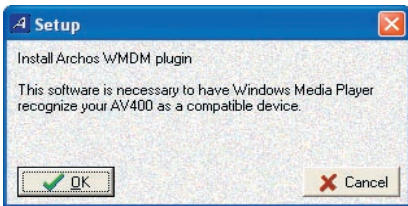


If you do not already have Windows Media Player version 9 running on your computer, you can install it from the Archos Installation Utility. Connect your Gmini 400 to your computer. In Windows Explorer, open up the hard drive labeled JUKEBOX. It may be called JUKEBOX (E:) or with another letter. Open the folder Data, then the folder PC

Installation, then double-click on the file Setup.exe. In other words, follow the path E:\Data\PC Installation\setup.exe. Click on the icon according to your operating system. Follow the on screen instructions.

6.2 Installing the WMP9 Service Provider Plug-in

You should first make sure you have properly installed Windows Media Player 9 as explained above. To install the Service Provider Plug-in to Windows Media player, run the Archos Installation Utility as explained above, and then chose Archos Media Player Service Provider Plug-in. Follow the on screen instructions. If you have accidentally deleted it,

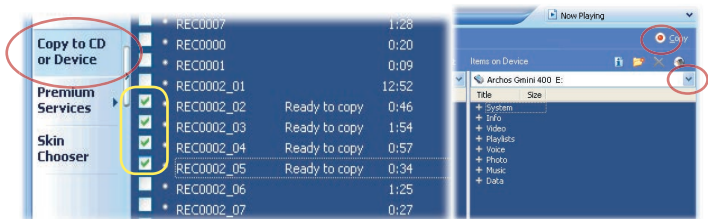


you can download it from the Archos website 'software' category (www.archos.com). With your Gmini 400 still connected to your computer, start Windows Media Player. Normally, you will connect your Gmini 400 to your computer before you run the

WMP9 program. If you connect it after WMP9 has been started, you will have to click on View > Refresh in order for WMP9 to go check and find the connected Gmini 400.

6.3 Copying Music to your Gmini 400

Run Windows Media Player.



1. Choose Copy to CD or Device and then check the songs from your Music Library that you want to copy to your device.

2. Choose the Gmini 400 device then select the folder you want to copy your songs to. Now click on Copy.

6.4 Copy Protected Music Downloads

With music download services such as Napster.com, MusicNow.com, BuyMusic.com, and Liquid.com, you can purchase music on-line and then store it on your Gmini 400. These music files are protected with the Microsoft® copy protection system. When they are downloaded to your computer then transferred to your Gmini 400, they will play only on your devices. These files will not play on other people's computers nor on other people's portable music players.

7

MUSIC - Using iTunes™ with your Gmini 400



The easiest way to transfer music files between a Macintosh® computer and your Gmini 400 is to use the Macintosh Finder™ to drag and drop the files to and from your Macintosh®.

However, for Macintosh® users who do want to use the Gmini 400 with iTunes®, Archos has developed a special i-Tunes® plug-in. You will find it in the folder **/Data/i-Tunes Plug-in** on the Gmini 400 hard disk or from the Archos website. In this folder you will find a .sit compressed file. Uncompress it and open the folder for your operating system. You will find a JPEG image illustrating where you need to copy the plug-in to. Once this is done, iTunes™ will recognize the Gmini 400 as a 'Device'.

To make your user experience easy as possible, please keep in mind the following.

1) When you create your Playlists with iTunes® (you can only create Playlists from songs that have been copied to your Gmini 400), your Macintosh® will save these Playlists to the root directory of your Gmini 400. It will not save them to the Gmini 400 Playlists directory. It would be best to use the Gmini 400 itself to make Playlists (section 4.2) and then save these Playlists in your Playlists folder.

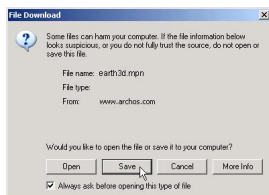
2) When you drag and drop MP3 files from your iTunes® library to your Gmini 400, the i-Tunes® program will look at the ID3 tag information (See section 3.3 of this manual for an explanation of ID3 tags) of the MP3 file, and create a folder on the root of your Gmini 400 using the name of the Artist as the folder name. Then it will take the Album name ID3 tag, and create a subfolder with that album as its name. Finally, it will take the MP3 song itself and place it into that album subfolder. Thus, although it is a clean structure of artists and albums, i-Tunes® does not follow the Gmini 400 convention of placing the music into the **Music** folder first.

8

GAMES - Playing Mophun® games

Your Gmini 400 has a built-in Mophun® game engine. What that means is that it can run games created for the Mophun® gaming platform. Included with your Gmini 400 is the full version of one of the game titles available from Archos. You will also find other sample games on your Gmini 400.

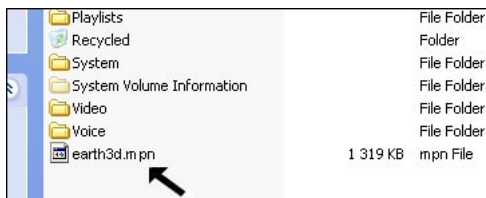
8.1 Downloading Games



To see a complete list of games for sale, go to the Gmini 400 presentation page on the Archos website (www.archos.com) and click on the Gmini 400 Games link. Once you purchase the game, you will be presented with a download message box. Your browser may warn you that the contents of the download may harm your computer. This is because the Windows®

system does not know what a .MPN file is. Be assured that Archos has made every effort to ensure that the file does not contain viruses. Click on the option **Save** to download this file to a convenient place, such as *My documents*, in order to later copy this file to your Gmini 400.

Copy to Gmini 400 root



Connect your Gmini 400 to your computer (section 13.1), and then copy the .MPN game file to the root directory of the Gmini 400. The root directory is the

top most level of the directory hierarchy. Just drag this .MPN file onto the Gmini 400 Hard disk in your file manager and it will place it in the top most directory (outside any folder). Once this file is copied, safely disconnect (section 13.2) the Gmini 400 from the computer.

Once disconnected from your computer, the Gmini will notice that there is a new game file on the root directory and will install the game automatically. It will then erase the .MPN file that you copied to the root directory. It is a good idea to keep a copy the installation file on you PC. Even if that file gets lost, you can always go back to the Archos website and re-download your purchased game free of charge.

You may notice that there is a folder on your Gmini 400 hard drive called Mophun. You should not delete this folder nor copy any files into it. Purchased games will install themselves into this folder.

8.2 Playing a Game



Just highlight the **Games** icon in the main screen and click the Go button. You can choose from the list of games presented. Once selected, follow the on-screen instructions.

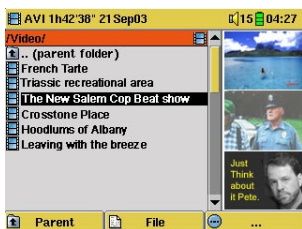
9

VIDEO - Playing Video



Like a music file, you simply highlight the video file and then click on PLAY/GO ►. The thumbnail images on the right side will show you a frame from the highlighted video file (center) as well as a frame from the file above and the file below the highlighted one. By clicking on the Video icon in the main menu, you will enter into a display 'video only' mode. Other playable file types that may be in this folder

are only listed if you enter the folder via the Browser.



To watch your videos on a television, you must hold down the F2 function button (the center function button) for three seconds. The Gmini 400 screen will go black and the video will be sent out to your connected television. Switch your television to auxiliary video input (often found just below channel 1 – sometimes called L1 or L2). If you don't see a clear color image, you may have to set your Gmini 400 to your

local television standard (NTSC or PAL) in the **Setup > Display** settings menu.



- Use the PLAY/GO ► button to pause/resume the video.
- Use the UP/DOWN buttons to control the volume.
- Hold down the RIGHT/LEFT buttons to fast forward or fast reverse through the video.
- Click the right function button to Hide/Show the overlaid video time information.
- Click the Options function button to set a bookmark, change the screen presentation. Long press to switch between built-in video and external video.

- Click on the left function button to put the video into slow-motion view. You can cycle through the values Normal, $\frac{1}{2}$, $\frac{1}{4}$, and $\frac{1}{8}$ speed. The sound is muted when in slow motion. While in slow mode and paused, you can step image per image with the RIGHT button.



9.1 Setting a Bookmark



If you are watching a video and would like to place a bookmark in it in order to continue from this point at another time, you can use the Bookmark function. You simply click on the center function button labeled Options, then choose Set Bookmark. This will set a bookmark in the video file at the current position. You can only set one bookmark per file. When you look at the file in your browser, it will have a yellow check mark on its icon indicating that this file has a bookmark set within it. You can have a maximum of 16 files bookmarked. Setting more bookmarks will then start to erase the oldest bookmarks. The next time you play this video file, you will be presented with three options:

Resume: Start playing from the bookmarked position.

Ignore: Keep the bookmark but start playing from the very beginning.

Clear: Clear the bookmark from this file and start playing from the very beginning.





9.2 The Resume Function



When you turn on your Gmini 400 you will sometimes notice that the icon which is highlighted on the main screen is not the **Browser** but rather the **Resume** icon. This icon is highlighted when the Gmini 400 can resume the last played audio or video file.

9.3 Display Format Settings

You will notice in the **Options** button (center function button), that you have a number of display format options. In certain cases, depending on how the original video was recorded, you may want to use these adjustments.

	Default mode : Adjusts the video size to best adapt to the LCD screen.
	4/3 aspect: Enlarge the image to fill the screen (usually a vertical fill) and then cut the sides to completely fill a television screen.
	16/9 aspect: Send out a TV signal without the black horizontal bars.
	No Overscan: Picture will not pass into the overscan area. Entire picture will always be seen on all televisions. Will not be cropped on the LCD.

9.4 Playing Video Files from the Internet

The number of encoding and compression schemes currently used to create video files is very extensive and seems to change on a weekly basis. There are so many standards and formats that it is very possible that the video file you download from the Internet will not play right away on your device. Due to certain "variations", even when video files are formatted in "MPEG4" they may not play right away. The Gmini 400 series can play video files of type MPEG4 Simple Profile which have an MP3 or IMA-ADPCM audio sound track. It can play such video files which have a maximum size of 640 x 400 pixels (30 frames/second). The Gmini 400 will not directly play files of type .mov, .mpg, .mpeg, or .avi files created with codecs (compression/decompression) other than the XviD and DivX™ MPEG4 codecs. If you have video files of these other types that you would like to view on your Gmini 400, they will have to be converted first. You will have to use the software *MPG4 Translator* included on the Gmini 400 hard disk to re-encode them into the proper XviD or DivX™ MPEG4 format with an MP3 or IMA-ADPCM sound track. See chapter 10 for more details.

How to create an MPEG-4 video file

Please understand that video re-encoding is not always a simple one button process. Video segments that come from your digital camcorder or which are freely available on the Internet are encoded in many different ways. If not already in the proper MPEG4 Simple Profile format, transforming these videos into this format readable by the Gmini 400 requires use of the below mentioned software tools. This is due to the relatively new nature of the ISO (International Standards Organization) MPEG4 video format. Unlike its predecessors MPEG1 and MPEG2, there are a number of levels in this format and thus not all MPEG4 video files will work on all MPEG4 players, and older MPEG1 and MPEG2 files must be re-encoded into this format. Although you may have a bit of a learning curve in the initial re-encoding of video files, once you have the process down, it is just a matter of letting your PC or Mac go to work and create video files for playing on your Gmini 400.

PC Tools

The Gmini 400 is delivered with two Windows® based programs that allow you to create MPEG4 Simple Profile .AVI video files. They are the *MPG4 Translator and Virtual Dub™*. The MPG4 Translator will call the Virtual Dub program and give it the correct parameters to encode your video from its original format, .avi or .mpg (mpeg 1), and then encode it into a DivX™ based MPEG4 .AVI file. The file will be scaled in order to be played back properly. Only MPEG4 files encoded with DivX™ or XviD can be played on the Gmini 400. Please visit the website of DivX Networks, Inc (www.divx.com) to download this codec. This is a free codec. This will allow your PC to create DivX™ type videos which play on your Gmini 400. If you would like to have your sound track in MP3 format, you may have to download this audio codec (available freely on the Internet) if it is not already on your computer.

Macintosh Users

Until recently, the Macintosh user community did not have any tools to create DivX™ simple profile MPEG4 video files. There are now tools available for purchase at the DivX™ Networks web site which will allow you to create DivX™ simple profile files with your Macintosh that are playable on the Gmini 400.

10.1 Installing the PC Software

If your video file is not an MPEG4 Simple Profile .avi file of the proper size, you will need to re-encode it using the following utilities. For the Gmini 400, you will need to create an AVI file that is MPEG4 Simple Profile with a maximum resolution of 640 x 400 and a sound track that is stereo MP3 or WAV. Run the program SETUP.EXE (the Archos Installation Utility) found on the Gmini 400 hard drive in **/Data/PC Installation**. Please install the programs in the following order.

DivX™ Codec

This software will install the DivX™ **Compression/Decompression** onto your PC. You should shut off any anti-virus programs when installing this or other codec software. This is not a program that is run by itself. Rather, it installs background software which allows your computer to do high quality video compression. This is the MPEG4 compressed video type that the Gmini 400 knows how to play. You can find this codec software, as well as an application that allows you to play DivX™ videos on your PC, at the website www.divx.com. The standard version is the one best suited for your Gmini 400. If you do not use the standard version, uncheck the bidirectional encoding in your DivX codec property page.

Virtual Dub™

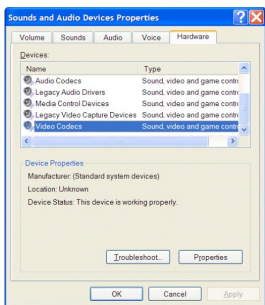
A utility for transcoding one video file into another. This is a general purpose transfer and cleanup utility which has many options allowing for even the most difficult video translations. When you install it with the Archos Installation Utility, it will automatically unzip. It will prompt you to save it to C:\Program Files\VirtualDub. You should use this default directory location. Otherwise you will have to instruct the MPG4 translator program where to find it.

MPG4 Translator

This program, developed by Archos, is a “Front-end” for the Virtual Dub program. It has a simple interface which you use and it then tells Virtual Dub how to process the video file. It sets all the parameters for Virtual Dub specifically to create a video file in the right size and format to be read by the Gmini 400. When you run it for the first time, the MPG4 Translator will need to locate the Virtual Dub program. If you did not install Virtual Dub in the default location, you will have to show the program where Virtual Dub is.

MP3 Sound Codec

If *MPG4 Translator* detects a suitable MP3 codec on your PC, it will use it, and your video file sound track will be MP3. Otherwise, it will use the standard IMA ADPCM codec. There are MP3 encoders (usually packaged together as an encoder and decoder) available on the Web for you to download. If you choose to use the LAME codec, make sure that you have a version built with the ACM front-end. You can find other MP3 codecs on the web by using the search terms ACM, MP3 and CODEC in your favorite web search engine. Once this MP3 codec is installed into your system, MPG4 Translator will be able to create final video files with MP3 sound, even if the source video file does not have an MP3 sound track.

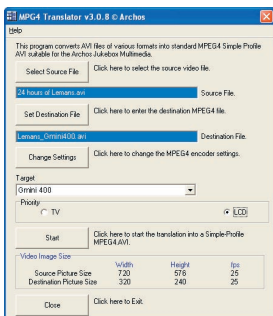


If you are unsure what codecs (audio and/or video) have been installed on your computer, you can see the list by going to the following location.

For Windows XP, click on **Start > Settings > Control Panel > Sounds and Audio Devices Properties > Hardware >** choose **Audio Codecs**, then click on **Properties**. You will find a list here of all the audio codecs that are installed on your computer. Decoding of MPEG 2 video files is currently not supported by MPG4 Translator. These are usually .mpg or .mpeg

format files, not the required AVI file. There are other tools found on the Internet (FlaskMPEG, Rippack, etc.) that may be downloaded in order to help you with these file types. A good starting place is the website www.digital-digest.com.

10.2 Using MPG4 Translator



Here you see the image of the main MPG4 Translator program. When you first run the program, if the DivX™ codec has not been installed yet, you will be notified. You should download the codec and install it on your computer. If the Virtual dub program has not been installed, you will also be notified, and you should install it (either with the Archos Installation Utility or the Virtual Dub website). If you have placed the Virtual Dub program in a folder other than the default, it will ask you to locate the file.

Select Source & Destination Files

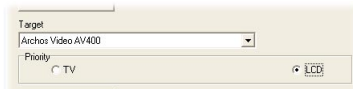
In the example above, a source file 24 hours of Lemans.avi has been selected as the source video. You can see on the bottom of the window its original characteristics (width 720, height 576, frame rate 25). Next, you must then tell the program where to place (Set Destination file) the newly recorded version of the file (don't worry, it will not erase the original). You should give it a new descriptive name, such as shown above Lemans_Gmini400.avi. Make sure you add the .avi extension.

Change Settings

Next, you can change the parameters (Change Settings) of the DivX™ encoder to adjust the level of quality of the final image. Like MP3 music, the higher the bit rate setting is made, the higher the quality of the music, or video in this case, that you will get. However, this will also take up more space on your hard disk. A setting of 900 kbps will give you a nice looking image for viewing on a television. For near DVD quality, you can set it up to 1200 kbps. If you do not use the standard version, uncheck the bidirectional encoding in your DivX codec property page.



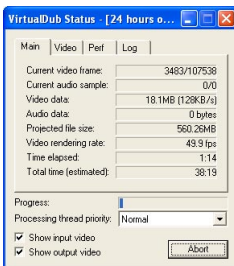
Target & Priority



You should select the target as Gmini 400. You will see a Priority box appear. This control is to allow you to select which feature of the video to be guarded. If for

example you are re-encoding a video file that is 800x600 in resolution and 30 frames per second, this is beyond the maximum resolution that the Gmini 400 can play. Thus, the MPG4 Translator program will have to decrease the resolution. Choosing **LCD** optimizes the final video format for viewing on the built in LCD screen. Choosing the **TV** option will optimize the movie to keep the highest possible frame rate. You can see what the size and frame rate will be by looking at the **Video Image Size: Destination** parameters. When choosing **TV**, it is understood that the output will be optimized for a television, and not the built-in screen.

Start



Click on *Start* and the program will call Virtual Dub to start processing the video. Depending on the power and speed of your computer, this could take real time (a 60 minute long video re-encoded in about 60 minutes) or much longer. As shown to the left, you will see the progress as it processes the video file. If the *Start* button is grayed out, it would be for one of two reasons. 1) The source file is not a true AVI file. Even if the file name ends with .avi, the internal file data determines if it is truly an AVI file. 2) The Virtual Dub program was not located when MPG4 Translator was

started up. Close the program, restart it, and make sure you locate the Virtual Dub program.

PHOTO - Viewing Photos



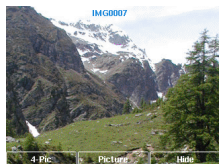
The Gmini 400 series support the viewing of JPEG (.jpg) and Bitmap (.bmp) image formats. Progressive JPEG images are not supported. The Gmini 400 will resize the image to fit on the built-in screen or on a television screen if you choose the television output. The yellow bar above the list of files indicates that you are in the 'Photo Only' mode, meaning that only files of type JPEG or BMP will be visible in the directory. The three images on the right are thumbnail sized pictures of the highlighted file (center) and the picture just before and just after the highlighted file.

If you are viewing photos on a television (long press on F2 to switch to external video), it is recommended that you set the **Image Display** setting to **Progressive** to eliminate any possible screen flicker. You will find this in the menu **Setup > Display**.

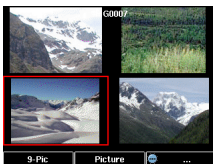


11.1 Viewing Photos

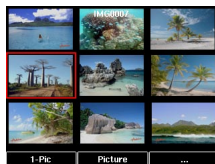
When you click Enter ► on a highlighted image file, the Gmini 400 will display the image in the carousel, either alone, within a group of 4 images, or within a group of 9 images. A red rectangle will surround the selected photo. Click on Enter ► again to display the image in full screen. Once it is displayed as a full screen image, you can rotate it, magnify it, or set it as the Gmini 400 screen background (Wallpaper).



1 x 1 image



2 x 2 images



3 x 3 images



Rotate picture 90° left

View next photo



Rotate picture 90° right

View previous photo

- Click the left function button **#-Pic** to change the number of photos in the carousel view.
- Click the center function button **Picture** to display the picture options.
- Click on the right function button **Hide** to hide the picture name and function buttons.

Magnifying Photos

Once the picture is displayed in full screen, clicking the PLAY/GO button ► will magnify the image up to three levels. Each successive click of the PLAY/GO button will magnify the picture one more level. You can use your direction buttons to move the picture around in order to see the desired magnified area. The small + signs on the bottom left of the screen indicate the level of magnification, either +, ++, or +++. Click on STOP/ESC to go back to an unmagnified view.

11.2 Viewing a slideshow



By clicking on Slideshow, the Gmini 400 will present each picture in the current folder for a set amount of time and then go on to the next picture. You can set the amount of time that each picture stays on the screen under **Setup > PlayMode > Picture Pause**. This parameter is the number of seconds each picture displays on the screen.

11.3 Transferring photos to your Gmini 400



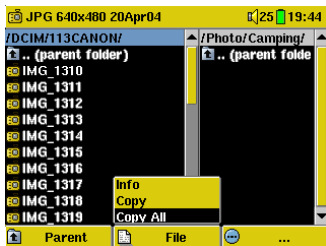
To transfer pictures from your digital camera directly into the Gmini 400, you will insert your digital camera's Compact Flash™ card* into the slot on the left side of the Gmini 400. Open up the door to the slot by unlatching the center clasp with your thumbnail.



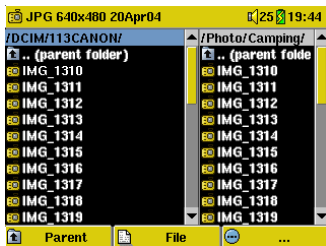
***Attention: In order to protect the delicate pins in the CF card slot, the door to the slot only opens far enough to allow the CF card to enter. Do not force it to open further than shown in the photo here.**

Slide the card in with its front side facing the back of the Gmini 400.

When you insert the card, the Gmini 400 will recognize it and open up two browser windows. The left window will show the contents of your CompactFlash™ (CF) card* and the right window will show the contents of your Gmini 400's hard drive. Navigate to the folder on your CF card which contains your photos (in this example `/DCIM/113CANON`). Move to the right window (click the right button) and navigate to the folder you would like to save your photos to (you can create a new folder if you need to by clicking on the right window's **Folder** (f3) button).



Photos from CompactFlash™ on the left, and your Gmini 400 hard disk on the right. Choose destination folder then choose **File > Copy All**.



Your files will be copied to the folder on the right side of the screen. You can now pull out the CF card from the Gmini 400.

If your image files are not seen in the left screen, you may have to go the **Setup > System > Show all files** parameter and set it to **On**. Once set to on, all file types, regardless of their extension (.txt, .raw, .pdf, etc.) which are on your CF card will be visible in the left browser screen. You cannot copy files to your CF cards from your Gmini 400.

**If your camera uses SmartMedia™, Memory Stick® (MS), MultiMedia Card (MMC), or Secure Digital™ (SD) memory cards, you can purchase the optional Archos 4-1 CompactFlash™ adapter which will allow these card types to be read by the Gmini 400.*



The browser is used to navigate the file system on the Gmini 400. The file system is FAT32, the same type of file system that is found on Windows® based computers. That is, it is a hierarchical system which includes folders and subfolders.

Because you will be putting hundreds of files on your Gmini 400, it is **STRONGLY ADVISED** that keep a neat and orderly file structure. Otherwise, you will be spending time searching for files and not listening or watching them. We suggest that on the first level of your file structure, you include the folders: Data, Music, Playlists, Photo and Video.



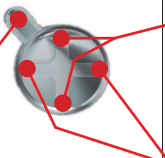
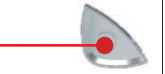
The folders **Music**, **Photo** and **Video** are special folders in that the icons on the main screen lead to these folders and then places you directly in that folder. If these folders are deleted, you will be placed at the root level (highest level) of the directory hierarchy.


12.1 Navigating the Directory Structure




Just below the top status bar, you can see the path to the directory you are currently viewing.

To navigate the directory structure you will use:

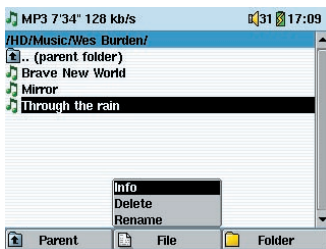
<p>ENTER ► Open the highlighted folder (directory) or Play the highlighted file.</p>		<p>Move the cursor up and down to the previous or next file or folder.</p>
<p>ESC/STOP Go back to the main menu.</p>		<p>Move back and forth between windows in the double browser.</p>

<p>Parent</p> <p>Go to the parent directory (go back up one level). Example: Go from folder /Music/Wes Burden/ to /Music.</p>		
--	--	--

12.2 Navigating the Directory Structure

Depending on where you are in the directory system, you will have the option to manipulate files and folders. From the main menu, click on **Browser**. Attention, there is a setting in the Setup > System menu called **Show all files**. If this is set to **Off**, the Gmini 400 will only display file types .mp3, .jpg, .avi, etc. That is, it displays only the file types that it knows how to play. To see all your files, including ones it cannot play, change the **Show all files** system setting to **On**. Files that it cannot play will be preceded by the unknown file type icon .

File Operations



MP3 7:34 128 kb/s 31 17:09

/HD/Music/Wes Burden/

- .. (parent folder)
- Brave New World
- Mirror
- Through the rain

Info
Delete
Rename

Parent File Folder

Folder Operations



31 17 10

/HD/Music/

- The Beach Boys
- The Beatles
- The Byrds
- The Doors
- The Eagles
- The Kinks
- The Moody Blues
- The Police
- The Rolling Stones
- The Who
- Wes Burden

Create
Delete
Rename

Parent ... Folder

Info: Show file information such as song length, video length, photo size, number of kilobytes used of hard disk space, date file was made, etc.

Delete: Delete the file permanently from the Gmini 400. (Before it is deleted, the Gmini 400 will ask "**Delete file: xxxxx ?**". Use the function keys to reply Yes or No. For folder, it will delete the entire contents of the folder. It will ask "**Delete folder: xxxxx and all files therein?**". Use the function keys to reply Yes or No.

Rename: Change the name of the file or folder to something new. You will be sent to the virtual keyboard (see next section) to enter the new file or folder name.

Create: Create a new folder in the current level of the directory. You will be sent to the virtual keyboard (see next section) to enter the new folder name.


Copying and Moving Files and Folders

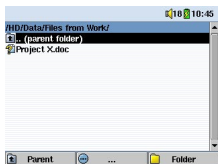
By using the unique Archos double browser system, you can copy or move files from one location in the file structure to another (1000 files per folder maximum). You simply click on the RIGHT button, and a second browser window will open. The double browser can be used in:

Photo View: Left browser shows the memory card and right browser the Gmini 400 hard disk.

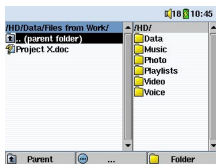
Music View: Left browser is the Gmini 400 hard disk and right browser the music Playlist.

Browser View: Two browser windows to browse two different parts of the Gmini 400 hard disk.

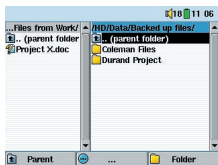
In the Browser mode, you can jump between the two windows using the LEFT and RIGHT buttons. Where the cursor is highlighting a file or folder, that window is the source for the copy. The destination folder will be the other window. For example, we want to copy the file **Project X.doc** from the **HD/Data/Files from Work** folder to the **HD/Data/Backed up Files** folder. We must start from the main screen Browser  mode.



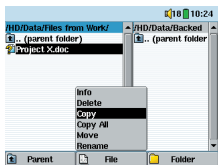
1) Locate the file to copy.



2) Click the RIGHT button to open a new browser window.



3) Click the **RIGHT** button again to move the cursor to the right browser (LEFT button) and find the desired destination folder.



4) Move back to the left browser (LEFT button), highlight the file to copy, and select copy from the file menu. The file will be copied to the folder in the right browser. Entire folders can also be copied or moved in this same manner.

12.3 Using the Virtual Keyboard

It is recommended that you create folders and rename files or folders from your computer when it is connected to the Gmini 400. The computer keyboard is much easier. Often times, however, you are not near your computer and you must enter the text directly with the Gmini 400. For this, the virtual keyboard screen will appear.

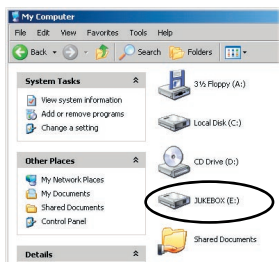
The new text that you are typing in Cursor	
	<p>Each key has an upper case and lower case character (lower case mode shown here).</p> <p>Press ENTER ► to enter the highlighted key.</p> <p>Hold down on the LEFT or RIGHT buttons to move the cursor within the line.</p> <p>Change keyboard between upper case and lower case</p>
Confirmation to use the entered text	Backspace button

Note that when the Gmini 400 is connected to a computer, it will use more energy than usual. Your battery power will be consumed at a higher rate than normal. If the Gmini 400 loses power while connected to your computer you could damage your directory structure and/or lose data. Thus, you should **always use the AC adapter** when connected to your computer. Be careful to understand the disconnection procedure also since disconnecting incorrectly can lead to data loss or computer/Gmini freeze up. The Gmini 400 is not compatible with Windows® NT, Windows® 95, or Windows® 98 (first edition). Windows 98SE® (second edition) drivers are available on the Archos web site. While connected as a hard disk to your computer, the Gmini 400 buttons are blocked and are no longer functional.

13.1 Connecting the Gmini 400

- 1) Use the power adapter to prevent the Gmini 400 from shutting off due to low power. (This could cause damage to the contents of the hard disk if not done.)
- 2) Plug the USB cable into your running computer.
- 3) Turn on the Gmini 400 – wait until it completely boots up.
- 4) Plug the other end of cable into your now running Gmini 400.

Windows® ME, 2000, XP (Home/professional)



When connected, the Gmini 400 will be recognized as a Mass Storage Device and display automatically within a few seconds of being connected. You will see a new drive letter, such as E: in My Computer called JUKEBOX. You can now use the hard disk called JUKEBOX like any other external hard disk. Simply access it using Windows® Explorer to drag and drop files to and from the Gmini 400's hard disk. If it is not automatically recognized, please refer to the troubleshooting section at the back of this manual.

Macintosh™ OS 9.X



You must update your operating system to a minimum of version 9.2. Once done, you will not need any special drivers or extensions. You simply plug the Gmini 400 into your Macintosh as enumerated above, and within a few seconds, the Gmini 400 will be recognized as a mass storage device (Hard Disk) and mount on the desktop. You can now use the Hard disk called JUKEBOX like any other external hard disk.

Macintosh™ OS X

We highly recommend that you update to Macintosh OS 10.2.4 or later. If you have Mac OS X before the 10.2 upgrade, you will find that version 10.1 may mount the Gmini 400 as a hard disk on your desktop, but **ONLY** after a very long wait, up to 10 minutes. Version 10.0 of OS X does not have the ability to properly recognize a mass storage device such as the Gmini 400.

Macintosh™ OS X (10.2 Jaguar and 10.3 Panther)



If you have OS 10.2, you must update to version 10.2.4 or newer. This is a free update from Apple® Computer. You will not require any special installation of software drivers or extensions. You simply plug the Gmini 400 into your Macintosh as enumerated above, and within a few seconds, the Gmini 400 will be recognized as a mass storage device (Hard Disk) and mount on the desktop. You can now use the Hard disk called JUKEBOX like any other external hard disk.

13.2 Disconnecting the Gmini 400 from your Computer

WARNING: You must properly remove (unmount) your Gmini 400 from the computer **before** disconnecting the USB cable to avoid loss of data or freezing the computer and/or the Gmini 400.

DO NOT SIMPLY PULL OUT THE USB CABLE AT ANY TIME!

To safely disconnect the Gmini 400 hard disk, click on the system tray remove icon (green arrow as shown below) and follow the instructions. Wait until you get a message saying that you can safely unplug the device before disconnecting the USB cable. Attention: The operating system will not allow you to safely disconnect the Multimedia Gmini 400 if you have an open file from it in a running application. You will have to close all open Gmini 400 files in any running application. Sometimes, even when files are closed in an application, you will have to shut down the application. Using the green disconnect arrow in the system tray will then allow you to safely disconnect the Gmini 400.

1. The safe remove icon is in the system tray next to the clock.



Windows® XP



Windows® 2000 & Windows® ME

2. Click on the icon to eject (unmount) the Gmini 400 from the computer and select the 'Safely remove' message.



Windows® XP & 2000

3. There will be a message indicating that it is now safe to disconnect the Gmini 400. You can now go ahead and unplug the USB cable from the Gmini 400.



Windows® XP



Windows® 2000

Note: Hitachi_DK23DA-20 only indicates the type of hard disk used inside of the Gmini 400.



Drag the Gmini 400 hard disk icon towards the trashcan, the trashcan will become a big arrow as shown in the screen shot to the left (Mac OS 9.x will still retain the trashcan icon. This is OK, don't worry.) Drop the hard disk icon onto the arrow (or trashcan). The hard disk icon will disappear from the desktop. You can now safely unplug the USB cable from your Gmini 400 and/or computer.

14 SETTINGS

From the home screen, select the **Setup** option to reveal the menu options for various settings.



14.1 Sound Settings



If you would like to customize the sound quality, you can adjust the Bass, Treble, and other audio settings to suit your particular taste. Normally you will do this while listening to music so that you can hear the changes you make. Simply click on the LEFT function button **Setup** while listening to music.

- Once in the Setup screen, move over to the **Sound** icon and click again on ENTER ►. Use LEFT and RIGHT to change a parameter's value. You will hear these changes instantly.
- Use the UP and DOWN buttons to select a different parameter.
- Click on STOP/ESC when finished. You will return to the Setup screen.
- Click on STOP/ESC again and you will return to the music playing screen.



The Sound Parameters

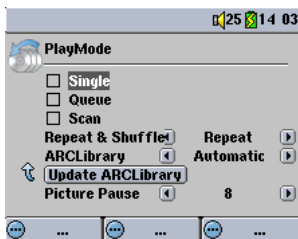
Parameter	Description
Volume	32 levels of volume (0-31).
Bass	10 levels. Decreases or Increases the low frequencies.
Treble	10 levels. Decreases or Increases the high frequencies.
Balance	10 levels. Favors the right or left channel of the Stereo signal
Bass Boost	10 levels. Increases the very low frequencies
Reset button	Readjusts all settings to their default values

14.2 Play Mode Settings









If you would like the Gmini 400 to play through an entire folder of songs, play songs at random (shuffle), or any of the other playing options, you can set these parameters in the PlayMode settings.

- Click on STOP/ESC to return to the Gmini 400 main menu and click on Setup. Or, while listening to a song click the LEFT function button **Setup**.
- Once in the Setup screen, move over to **PlayMode** and click again on ENTER.
- Highlight one of the five PlayModes and click on ENTER to check that option.
- With the **Repeat & Shuffle** setting, choose if the songs are to be played in order, repeated or shuffled.
- See section 3.4 for details on using the ARCLibrary
- Picture Pause sets the amount of time paused between pictures in the slideshow mode. See the Photo chapter for more details.



Play Mode

	Gmini 400 is currently playing from a Playlist
	Folder: Play all tracks in the current directory
	All: Play all tracks on Gmini 400
	Single: Play a single track then stop
	Queue: User can queue the next track to be played †
	Scan: Gmini 400 plays first 15 seconds of each track††

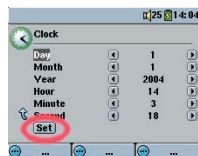
†Queue Mode: While the current song is playing, click on Navigate, find the next song you want to play, then click Play. This is your queued song. You can only queue one song at a time. See the Playlist section to prepare multiple songs to play. Once the current track is finished playing, your queued track will be played. If you do not queue another track at this time, the Gmini 400 will play the next song in the directory.

††Scan Mode: Each track in the directory is played for 15 seconds. This allows a quick sample of each song. If you want to play the whole song, click on the Play button during those first 15 seconds. The Gmini 400 will then revert to folder mode and play the rest of the songs in the folder without scanning.

14.3 Clock Settings



The Gmini 400 has an internal real time clock. The time of day is shown on the top right of the screen in either 24 hour or 12 hour display mode. To set it, go to **Setup** then select **Clock**.



Choose parameter



Choose Value for highlighted parameter



When finished setting the parameters, move down to the Set button, then click on the ENTER/GO button. The clock time and date are now set. Click on the STOP/ESC button to go back to the main settings menu.

14.4 Display Settings



These settings regulate the interface language and the presentation of the screen.



Setting	Description
Language	The Gmini 400 can be set to English (default), French, German or Spanish.
TV Standard	NTSC (USA), PAL (Europe). In order to view images or videos on an external television, select one option to send the video signal compatible with your country's television system. Countries other than European or American will use one of these two systems.
Video Output	Internal LCD or External TV. To display via the built-in LCD screen or to view the display via an external television. Holding the F2 function button for three seconds will also alternate between these two options. Be sure your television is selecting the correct external input.
Image Display	Interlaced, Progressive. This is the way the video output will be sent to the television. When viewing still images (JPEG and BMP) on a television screen, set this to Progressive to reduce possible flickering in the image.
Appearance	Change the interface appearance

Setting	Description
Wallpaper	On, Off. When set to On , the selected picture (next item) will be displayed as the Gmini 400 screen background.
Picture name	This option will display the names of the JPEG images in the Gmini 400's System folder that can be used for screen backgrounds (Wallpaper). You can add your own JPEG images to the System folder by dragging and dropping a JPEG file from your computer. You should use JPEG images with small dimensions, ideally 320 x 240 pixels (large files slow down the display).
Font Outline	If your screen background is a dark color, it will be difficult to see the black text on the screen. Set Outlined font to On to have a more visible white outlined font.
Color scheme	Allows you to choose what color you would like to have for the status bar above and the screen buttons below.
Cursor color	Allows you to change the color of the cursor.
Previous settings	Click this button to return to the settings last set.

14.5 Power Settings



These settings will help you to save battery power thus allowing a longer battery autonomy.

You can set the Gmini 400 to conserve power for both modes of operation (when it is powered from the battery, or when it is connected to the AC charger/adapter (DC-Power operation).



Parameter	Description
Power Off	1-9 minutes (and Never for DC operation). The number of minutes of user inactivity (no buttons pressed) before the Gmini 400 shuts off. During the playback of MP3 and AVI files, this setting takes effect only after the files are finished playing.
Backlight Off	10-90 seconds, Never. The time of user inactivity (no buttons pressed) before the Gmini 400 turns off the screen to conserve power. During playback of slideshows and AVI files, this setting only takes effect once it is finished playing.
Hard disk	10-90 seconds. The number of seconds from the time of the last file access before the Gmini 400 tells the internal hard disk to stop spinning. The longer this time is set, the more often the hard disk is turning and the quicker the response time when accessing files. However, as it is set longer, it will quickly consume your battery. Caution: This setting should only be changed by experienced users.

A typical use of these settings is to set the power off, screen off, and hard disk to low values when used in battery mode. When the power adapter is plugged in, you do not need to conserve energy and thus keeping the Power on and the Backlight on makes using the Gmini 400 more agreeable. Increasing the hard disk value beyond the default may actually discharge the battery even when the Charger/adapter is plugged in. Note also that your unit will run hotter when the backlight and hard disk are on for long periods of time.

14.6 System Settings



The System settings allow you control over the low level parameters of the Gmini 400.

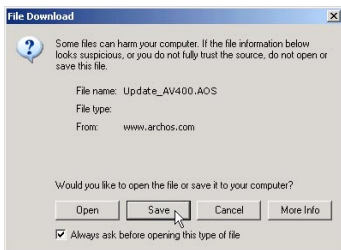


Parameter	Description
Show all files	Off (default), On . If set to Off , the Jukebox will only display the file names of file types, with their corresponding icons, that it knows how to play. If set to On , the Jukebox will display the names of ALL the files on the hard disk (using a ? icon for unknown types), even if they cannot be viewed or played, such as .tif or .pdf for example. This setting is important when inserting memory cards into the CompactFlash™ slot. Setting it to ON will allow the Jukebox to transfer all the files from the card media regardless of file type. If set to OFF, it will only display file types that the Gmini 400 is capable of playing.
Update Firmware	Used to update the Gmini 400 to a new version of the Operating System. See chapter 15.
Firmware Version	Displays the current version of the Operating System (OS).
Product Key	Each Gmini 400 device has a unique product key number. It is an ID needed for plug-ins and games.
Hard Disk	Displays the amount of free and used space on the Gmini 400's hard disk. The total is less than 20 GB due to space taken by formatting.

Updating the Gmini 400 Firmware Operating System (OS)

Archos periodically updates the Operating System (OS) and makes it available for free download on the ARCHOS website (www.archos.com). Updates to the Operating System include new features, feature improvements, and bug fixes. You should check to make sure that you are running the most recent version of the OS. Each time the Gmini 400 starts up, the OS version is displayed on the screen (example: OS Version 1.1) on the bottom right. You will find the most recent version of the OS and its version number at the Archos website (www.archos.com) under the category Software.

Download the Update_Gmini400.AOS file



When you click on the link to download the new OS file (the file name is `Update_Gmini400.AOS`), your browser may warn you that the contents of the download may harm your computer. This is because the Windows® system does not know what a `.AOS` file is. Be assured that Archos has made every effort to ensure that the file does not contain viruses. Click on the option **Save** to

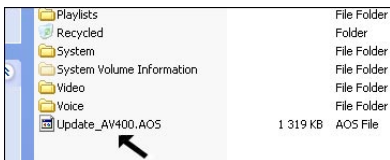
download this file to a convenient place, such as **My Documents**, in order to later copy this file to your Gmini 400. If your Gmini 400 is connected to your PC, you can even save it directly to the Gmini 400.

Read the History.txt File

You will also find next to the firmware download, a text file which details the list of changes from the previous version of the OS.

Copy to Gmini 400 root and Update

When updating your Operating System, you must keep the AC charger/adaptor plugged into the Gmini 400 so that it will not shut down due to low batteries while you are performing the update. Connect your Gmini



400 to your computer (section 16.1), and then copy the Update_Gmini400.AOS file to the root directory of the Gmini 400. The root directory is the top most level of the directory hierarchy. Just drag this .AOS

file onto the Gmini 400 Hard disk in your file manager and it will place it in the top most directory (outside any folder). If there is already an older version of the Update_Gmini400.AOS file on your Gmini 400, Windows® will ask if you want to overwrite the current file. Click on Yes. Once this file is copied, safely disconnect (section 13.2) the Gmini 400 from the computer.

Update Firmware

Next, go to the **System** parameters under **Setup** and then scroll down to *Update Firmware* and click on it. The Gmini 400 will search for the .AOS file and will ask you to click **Yes**, to start the update. Follow the on-screen instructions. When completed, the Gmini 400 will restart itself and you will see the new OS version displayed on the bottom right of the screen.

16 Technical Support

- For warranty and services purposes, keep your sales receipt for proof of purchase.
- If technical support (Telephone or E-mail) determines that your product needs to be returned, please contact the place of purchase to have your product repaired or replaced (depending on problem type). Customers who purchased directly from the Archos website should fill out the form on the website under Support: Product Returns.
- There is an FAQ – Frequently Asked Questions section at the ARCHOS Website www.archos.com, Support: FAQ that can help answer many of your questions.
- If you need technical help, you may contact ARCHOS directly in your own language via these phone numbers. For other countries, please use e-mail technical support.

-----Telephone Support-----

DO NOT USE PHONE SUPPORT FOR MARKETING AND SALES QUESTIONS. These numbers are to aid those who have technical difficulties / malfunctions.

949-609-1400	(USA, Canada)	09-1745-6224	(Spain)
01 70 20 00 30	(France)	02-4827-1143	(Italy)
0207-949-0115	(UK)	020-50-40-510	(Netherlands)
069-6698-4714	(Germany)		

-----E-mail Support-----

tech-support.us@archos.com	<i>English (United States and Canada customers)</i>
tech-support.eu@archos.com	<i>English or French (Europe and the rest of the planet)</i>
tech-support.de@archos.com	<i>German (Germany)</i>

To respond to your e-mails efficiently, when sending one, please indicate the product name and question type in the Subject of the e-mail.

For example:

To: tech-support.us@archos.com

Subject: Gmini 400 – Playing a Playlist

Worldwide Offices

United States & Canada	Europe & Asia
ARCHOS Technology 3, Goodyear - Unit A Irvine, CA 92618 USA Phone: 1 949-609-1483 Fax: 1 949-609-1414	ARCHOS S.A. 12, rue Ampère 91430 Igny France Phone: +33 (0) 169 33 169 0 Fax: +33 (0) 169 33 169 9
United Kingdom	Germany
ARCHOS (UK) Limited 3 Galileo Park Mitchell Close West Portway Andover SP103XQ Andover United Kingdom Phone: +44 (0) 1264 366022 Fax: +44 (0) 1264 366626	ARCHOS Deutschland GmbH Bredelaerstrasse 63 40474 Düsseldorf Germany Tel: +49 211 1520 384 Fax: +49 211 1520 349

17.1 USB Connection issues

Problem: I cannot get my Gmini 400 to be recognized by the computer.

Solutions:

- Shut off and reboot the computer and the Gmini 400 and then try connecting again in the preferred order mentioned in section 13.1.
- Only if using Windows 98SE, you must first install the Windows98SE drivers.
- If you installed the Windows 98SE driver on your Windows® XP, 2000, or ME edition, this could cause problems. Uninstall that driver and then reinstall the generic Windows® Mass Storage Device driver.
- If using a USB hub, try connecting without using the hub (some hubs are not powered and may not work with the Gmini 400).
- If using a USB port in the front of your computer, try a USB port in the back. Front USB ports are often from non-powered hubs.
- Do not connect to a USB port repeated through a keyboard.
- On old computers, the USB driver software on your computer may be out of date. Find your USB chipset type by going to My Computer > Properties > Device Driver > Universal Serial Bus (USB) Controllers > Host Controller. You may have a chipset VIA, Intel, SIS or another. It is possible that you do not have the latest software drivers for these chipsets. For VIA updates, check out www.viaarena.com. For Intel check out www.intel.com. For SIS, uninstall the driver and reinstall the Windows default USB controller drivers.
- If using a laptop computer and a docking station, try connecting without the docking station.
- If Macintosh® OS 10.1.x says it cannot mount the volume, you can use Disk Utility to reformat the Jukebox hard disk to type MS DOS FAT32. However, files will only be readable from a Macintosh®, not a Windows® machine. You should update to version 10.2.4 or better.
- On older computers, make sure in your system BIOS the USB port is checked "ON" not "Off". Usually this just happens on old machines.
- On older Win98SE computers, if there is a line "lastdrive=" in the config.sys file, make sure that it is "lastdrive=z".
- If the Files Allocation Table (FAT) gets corrupted, the Gmini 400 may

not show up in Windows XP for over one minute, and then it comes up as **local drive**. Use DOS Utility **ChkDsk** as shown below.

- Windows® XP may recognize the Gmini 400 hard disk but yet not assign a drive letter to it. Right click on **My Computer** and select **Manage**. Then select **Storage**, then **Disk Management**. Within this window you may see the hard drive and be able to assign a drive letter by right-clicking on the hard disk, and selecting the option **Change drive letter and paths...**

Problem: What do I do if I try to disconnect via the green arrow but keep getting "The device 'Generic Volume' cannot be stopped now. Try stopping the device again later."

Answer: Shut off any program that might be accessing data on the Gmini 400, including Windows® Explorer. If this does not work, shut down all programs, wait 20 seconds, then try the green arrow one or two times again. If this does not work, you should shut down the computer and disconnect the USB cable once the computer is off.

17.2 Charging and Power issues

You do not need to fully discharge the batteries before recharging them.

Problem: A full battery charge does not last as long as the specifications suggest.

Answer: The specifications are under the condition that the screen backlight goes off after 30 seconds (for MP3 music) and the user does not access the machine, it just sits and plays. If you get significantly less time from a full charge, call our technical support hot-line.

17.3 Gmini 400 locks up (freezes operation) or Stops

Problem: The Gmini 400 locks-up. None of the buttons work.

Solution: If the lock buttons is set, none of the buttons respond. Hold down the F1 function button for three seconds to turn off the lock buttons function. A freeze up could also be caused by electrostatic phenomena. That is, static electricity has temporarily knocked out the Gmini 400. Hold down on the STOP/OFF button for 15 seconds and the Gmini 400 will shut off. Restart it normally now.

17.4 The Computer locks-up (freezes operation) or Stops

Problem: The computer locks-up.

Answer: Most likely because you did not use the green 'safely remove hardware' icon in the system tray in order to remove the Gmini 400 from your computer.

17.5 File issues, corrupted data, formatting, and partitioning

Problem: On the Gmini 400, I find new file names and folder names that I never created or they have strange gibberish names.

Answer: Most likely, the Gmini 400's file allocation table (FAT) has been corrupted. This could have been due to the Gmini 400 shutting down (due to low battery power) while reading or writing to your computer via the USB connection. To fix a corrupted FAT problem, you should use the Error Checking utility or the Check Disk utility explained at the end of this section.

Attention: Windows and Macintosh often write extra files to the hard disk such as **finder.def** or **System volume info**. These are normal and will not harm the Gmini 400.

Problem: I have been using my Gmini 400 to transfer files back and forth between different computers. Will defragmenting the Gmini 400 hard disk do any harm to it?

Answer: Defragmenting the Gmini 400 hard disk may be useful after having transferred many files to and from the Gmini 400. It is never harmful to use the defragmenter on the Gmini 400. Make sure no other program is running while using the Windows® defragmenter utility. **Make sure** you power the Gmini 400 with the external power adapter during this procedure.

Problem: I have copied files to my Gmini 400 via USB from my computer, but now I cannot see these files on the device.

Answer: You have probably transferred a file which the Gmini 400 cannot play, for example a PDF, MOV, or DOC file. Go to the System Settings under Setup on the main screen and you will find a parameter called Show all files. If you set it to on, the Gmini 400 will show all files, even if it cannot play the file (you must browse via the browser mode from the main menu screen). The browser will show a ? icon indicating that it is not one of the standard file types that it can play.

Problem: I want to reformat the Gmini 400's hard disk.

Answer: You can do this, but it will erase ALL of the data on your Gmini 400. Sometimes this may be necessary if your FAT (File Allocation Table) becomes so corrupted that nothing seems to fix your file problems. First, as explained below, you should run ScanDisk or the DOS chkdsk (Check Disk) program to try to fix your problem. If this doesn't fix your problem and you are sure you must reformat the Gmini 400 hard disk, then go to the screen Setup > System and press and hold the Right function button for three seconds. A button "Format HD" will appear. Use this button to format the Gmini 400's hard drive. Remember, doing this will erase all the data on the hard disk!!!

Problem: I would like to partition the Gmini 400 hard disk.

Answer: If you know how to partition a hard disk, this is OK. The Gmini 400 will, however, only recognize a FAT32 partition. Thus it will just see and use that partition of the hard disk which is a FAT32 partition.

Problem: My files have disappeared from the Gmini 400.

Answer: To see all your files, make sure the setting **Show all files** is set to **ON**. Also make sure that you browse your files via the **Browser** mode and not a filtered view such as **Photo**, **Music**, or **Video**.

Windows® 98SE & ME Running Scan-Disk (Error Checking)

- Quit all running applications.
- Properly connect the Gmini 400 to your computer as explained in chapter 13.
- Make sure external AC adapter is powering the Gmini 400.
- Right click on the Gmini 400 hard disk in Windows® Explorer and select Properties.
- Select the Tools option and run the Error checking program
- Make sure you check the box to automatically fix errors.
- Be patient, this may take a while. Windows® may ask you to restart the computer to make certain Windows files available. This is OK, click on Yes.

If you still have problems with the file system on your Gmini 400 you can try to fix it using the DOS utility, check disk (chkdsk). Do the following;

- Make sure external AC adapter is powering the Gmini 400.
- Quit all running applications.
- Properly connect the Gmini 400 to your computer as explained in chapter 13.
- Wait patiently (up to 5 minutes) for Windows XP to show the **local drive** as mounted.
- Open a DOS window. Programs > Accessories > Command Prompt.
- At the prompt, type **chkdsk e: /f**. Use **e:** or **f:** or whatever drive letter is representing your Gmini 400. The /f argument tells the program to automatically fix errors.
- Be patient, this may take a while.
- When it is finished, exit the DOS Window and properly disconnect the Gmini 400 from your computer.

18 Technical Specifications

ARCHOS VIDEO Gmini 400 series	
Storage Capacity	20 GB*
Computer Interface	High Speed USB 2.0 (compatible USB 1.1)
Image Playback	JPG and BMP (4, 8, 24 bit) images, any size
Audio Playback	Stereo MP3 decoding 30-320 kb/s CBR & VBR, WMA, WAV.
Audio Recording	Analog stereo WAV (PCM & ADPCM) - SPDIF not supported
Video Playback	Video track: MPEG-4 Simple Profile compliant .AVI format (reads DivX®*** 4.0 & 5.0 & XviD) up to 640x400 pixels @ 30fps or 640x480 @ 25 fps. Sound track: MP3 or WAV (IMA-ADPCM)
Screen	Color TFT LCD 220 x 176 pixels 262 thousand colors
Television	Video output in PAL (EU) or NTSC (US) standard
Playback Autonomy***	Up to 10 hours audio and up to 5 hours video
Scalability	Free Operating System updates downloadable from ARCHOS website
Ports	CompactFlash™ slot to read CompactFlash™ type I memory cards
AV Connections	Audio/video Multi-connect jack. Includes connections for audio IN and audio/video OUT.
Power source	Non-removable internal Lithium-Ion battery pack. External charger/adapter.
Physical Dimensions	106 x 60 x 18 mm (4.2 x 2.4 x 0.70 inches) - 160 grams (5.7 oz)
Temperature Range	5 °C to 35 °C running ; -20 °C to 45 °C storage
System Requirements	PC: Windows ME, 2000, XP - Pentium II 266MHz with 64MB ram Mac: OS 9.2 or X (10.2.4), iMac, G3 or higher

*1 GB = 1 billion bytes, formatted capacity is less.

**Files compatible with MPEG4-SP AVI only ; MPEG-4: ISO/IEC standard by Moving Picture Experts Group ; AVI: audio/video file container by Microsoft. DivX® is a registered trade mark of DivXNetworks Inc.

***Depending on usage (stop/start/power settings)

Warranty and Limited Liability

This product is sold with a limited warranty and specific remedies are available to the original purchaser in the event the product fails to conform to the limited warranty. Manufacturer's liability may be further limited in accordance with its sales contract. In general, the manufacturer shall not be responsible for product damages caused by natural disasters, fire, static discharge, misuse, abuse, neglect, improper handling or installation, unauthorized repair, alteration or accident. In no event shall the manufacturer be liable for loss of data stored on disk media.

MANUFACTURER SHALL NOT BE LIABLE FOR ANY SPECIAL, INCIDENTAL OR CONSEQUENTIAL DAMAGES. EVEN IF INFORMED OF THE POSSIBILITY THEREOF IN ADVANCE.

ARCHOS licensor(s) makes no warranties, express or implied, including, without limitation, the implied warranties of merchantability and fitness for a particular purpose, regarding the licensed materials. ARCHOS's licensor(s) does not warrant, guarantee or make any representations regarding the use or the results of the use of the licensed materials in terms of its correctness, accuracy, reliability, correctness or otherwise. The entire risk as to the results and performance of the licensed materials is assumed by you. The exclusion of implied warranties is not permitted by some jurisdictions. The above exclusion may not apply to you.

In no event will ARCHOS's licensor(s), and their directors, officers, employees or agents (collectively ARCHOS' licensor) be liable to you for any consequential, incidental or indirect damages (including damages for loss of business profits, business interruption, loss of business information, and the like) arising out of the use of inability to use the licensed materials even if ARCHOS' licensor has been advised of the possibility of such damages. Because some jurisdiction do not allow the exclusion or limitation of liability for consequential or incidental damages, the above limitations may not apply to you.

Please see your sales contract for a complete statement of warranty rights, remedies and limitation of liability.

Furthermore, warranty does not apply to:

- 1. Damages or problems resulting from misuse, abuse, accident, alteration or incorrect electrical current or voltage.**
- 2. Any product tampered-with or damaged warranty seal or serial number label.**
- 3. Any product without a warranty or serial number label.**
- 4. Batteries and any consumable items delivered with or in the equipment.**

Warnings and Safety Instructions

CAUTION

To prevent risks of electric shock, this unit must only be opened by qualified service personnel. Power off and disconnect the power supply cable before opening the unit.

WARNING

To prevent fire or shock hazard, do not expose the unit to rain or moisture. Use of this product is for personal use only. Copying CDs or loading music, video, or picture files for sale or other business purposes is or may be a violation of copyright law. Copyrighted materials, works of art, and/or presentations may require authorization to be fully or partially recorded. Please be aware of all such applicable laws concerning the recording and use of such for your country and jurisdiction.

SAFETY

For driving safety, only a passenger should operate the device when the car is in motion and not the driver. Laws governing the usage of electronic devices by the driver may be applicable in your jurisdiction and/or country.

FCC Compliance Statement

FCC Compliance

This equipment has been tested and found to comply with limits for a Class B digital device, pursuant to Part 15 of the FCC Rules. These limits are designed to provide reasonable protection against harmful interference in a residential installation. This equipment generates, uses and can radiate radio frequency energy and, if not installed and used in accordance with instructions, may cause harmful interference to radio communications. However, there is no guarantee that interference will not occur in a particular installation. If this equipment does cause harmful interference to radio or television reception, which can be determined by turning the equipment off and on, the user is encouraged to try to correct the interference by one or more of the following measures:

- Reorient or relocate the receiving antenna.
- Increase the separation between the equipment and receiver.
- Connect the equipment into an outlet on a circuit different from that to which the receiver is connected.
- Consult the dealer or an experienced radio/TV technician for help.

CAUTION: Modifications not authorized by the manufacturer may void users authority to operate this device.

FCC Part 15 - Operation is subject to the following two conditions:

1. This device may not cause harmful interference;
2. This device must accept any interference received including interference that may cause undesired operation.

Electrostatic Discharge

Note: During electrostatic discharge, the product may be malfunctioning. Reset to return normal operation. The Gmini 400 reset is actuated by pressing and holding the STOP/ESC button for 10 seconds. The unit will power off. Restart normally.

Copyright Notice

Copyright ARCHOS © 2004 All rights reserved.

This document may not, in whole or part, be copied, photocopied, reproduced, translated or reduced to any electronic medium or machine-readable form without prior consent, in writing, from ARCHOS. All brands and products names are registered trademarks and the property of their respective owners. Specifications are subject to change without notification. Errors and omissions accepted. Images and illustrations may not always match contents. Copyright ® ARCHOS. All rights reserved.

***Disclaimer of warranty:** to the extent allowed by applicable law, representations and warranties of non-infringement of copyrights or other intellectual property rights resulting from the use of the product under conditions other than as here above specified, are hereby excluded.*

LCD Pixel Policy

The LCD screen on your Archos Gmini 400 unit has been manufactured to rigorous standards to provide a high quality viewing experience. Nevertheless, your LCD screen may have slight imperfections. This is not particular to the Archos screen, but to all devices which have LCD screens regardless of the original manufacturer of the LCD. Each product vendor guarantees that his screen will contain no more than a certain number of defective pixels. Each screen pixel contains three dot elements (Red, Blue, and Green). One or all of the dots in a given pixel may be stuck on or stuck off. A single dot stuck off is the least noticeable. All three dots of a pixel stuck on is the most noticeable. Archos guarantees that its Gmini 400 screen will have no more than 1 defective pixel (regardless if that pixel has one or more defective dots). This means that during the period of guarantee for your country or jurisdiction, if the screen on your product has two or more defective pixels, Archos will repair or replace your AV400 product at its cost. Thus, one defective pixel is not grounds for replacement or repair of the product.

Avoiding Hearing Damage

This product respects the current regulations for limiting the output volume of consumer audio devices to a safe level. By listening to your device with headphones or earbuds at high volumes, you run the risk of permanent damage to your ears. Even if you get used to listening at high volumes and it seems normal to you, you still risk the possibility of damaging your hearing. Reduce the volume of your device to a reasonable level to avoid permanent hearing damage. If you hear ringing in your ears, reduce the volume or shut off your device. This device has been tested with the Archos supplied earphones. Other manufactures earphones may produces volume levels higher or lower than the Archos delivered earphones.