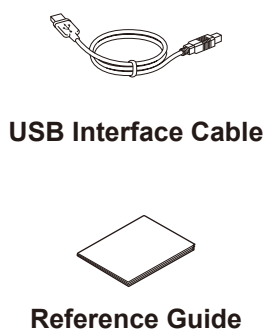
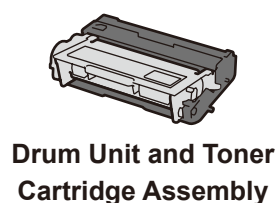
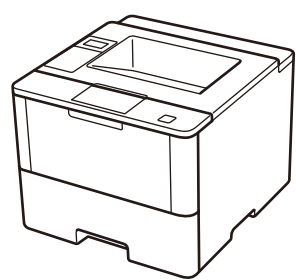


Unpack the machine and check the components



NOTE:

- The available connection interfaces vary depending on the model.
- Use the appropriate interface cable for the connection you want to use. (Network cable and Parallel cable are not standard accessories.)

USB cable

We recommend using a USB 2.0 cable (Type A/B) that is no more than 2 metres long.

Network cable

(For HL-5590DN / HL-5595DN)

Please purchase a straight-through Category 5 (or greater) twisted-pair cable for the machine.

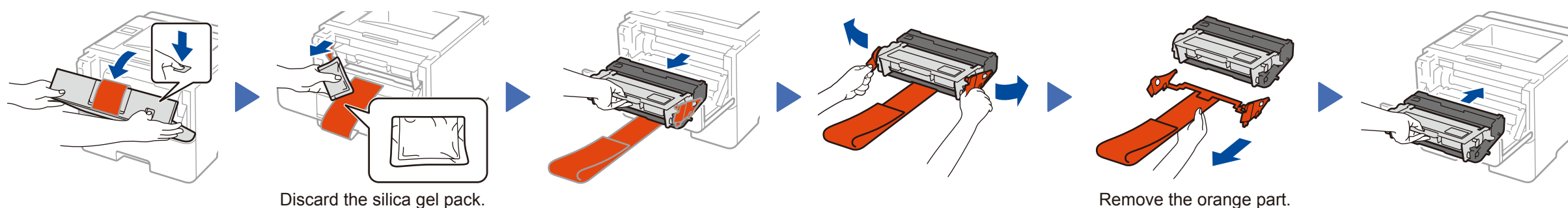
Parallel cable

(For HL-5580D)

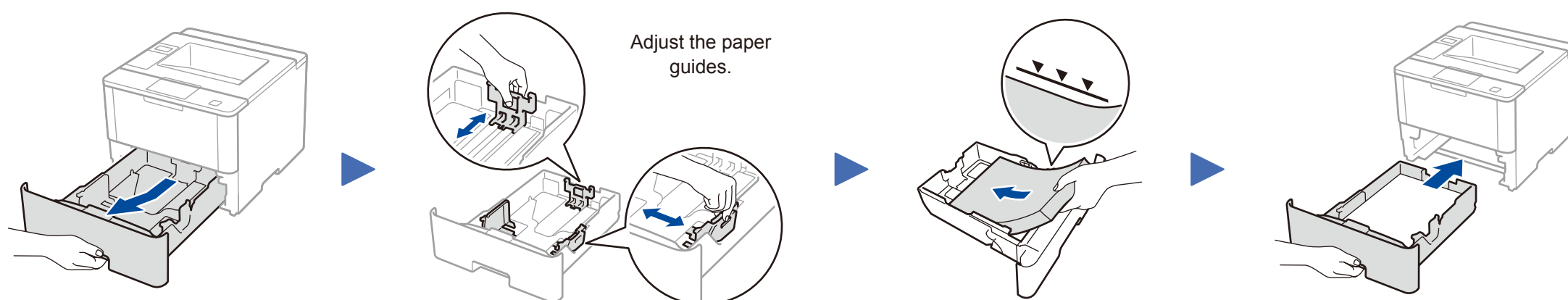
Please purchase the optional parallel cable (PC-5000) for the machine.

- The illustrations in this Quick Setup Guide show the HL-5595DN.

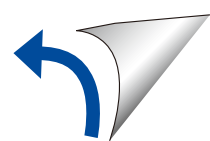
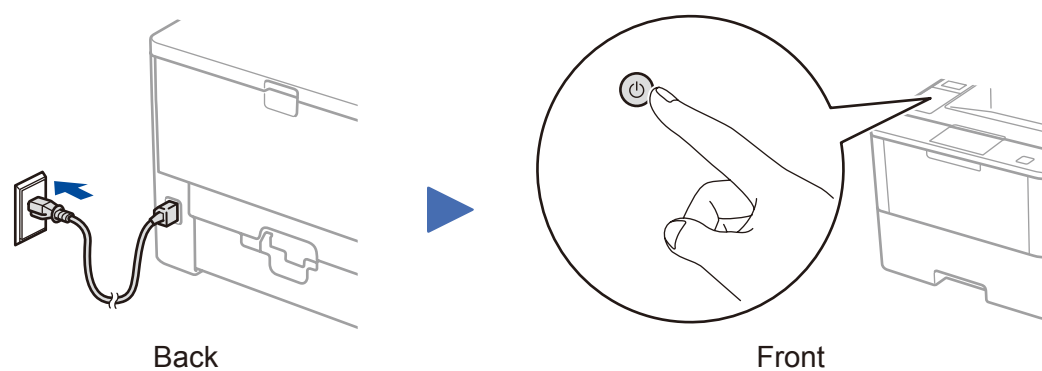
1 Remove the packing materials and install the drum unit and toner cartridge assembly



2 Load paper in the paper tray

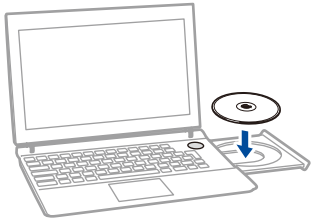


3 Connect the power cord and turn the machine on



Connect your machine and install software

Windows® computer with CD-ROM drive



NOTE:
If the Brother screen does not appear automatically, click **(Start) > Computer (My Computer)**.
(For Windows® 8: click the **(File Explorer)** icon on the taskbar, and then go to **Computer (This PC)**.)
Double-click the CD-ROM icon, and then double-click **start.exe**.

- For HL-5580D / HL-5585D
(The Parallel connection is only for HL-5580D)



- For HL-5590DN / HL-5595DN
Choose your Connection Type:

☐ Wired Network Connection (Ethernet)

☐ Local Connection (USB)

Macintosh/Windows® computer without CD-ROM drive



Download the full driver and software package from the Brother Solutions Center.
(Macintosh) solutions.brother.com/mac
(Windows®) solutions.brother.com/windows

Follow the on-screen instructions to continue installation.

Finish

NOTE:
If connection is unsuccessful, repeat this step.

